

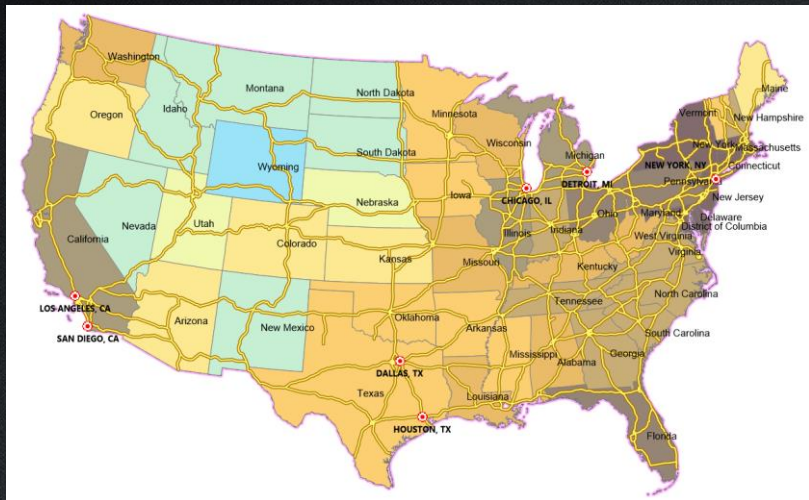
Making Professional Quality Maps

SuperMap Software Co., Ltd.



SuperMap

TO BE THE GLOBAL LEADING GIS



2D Map

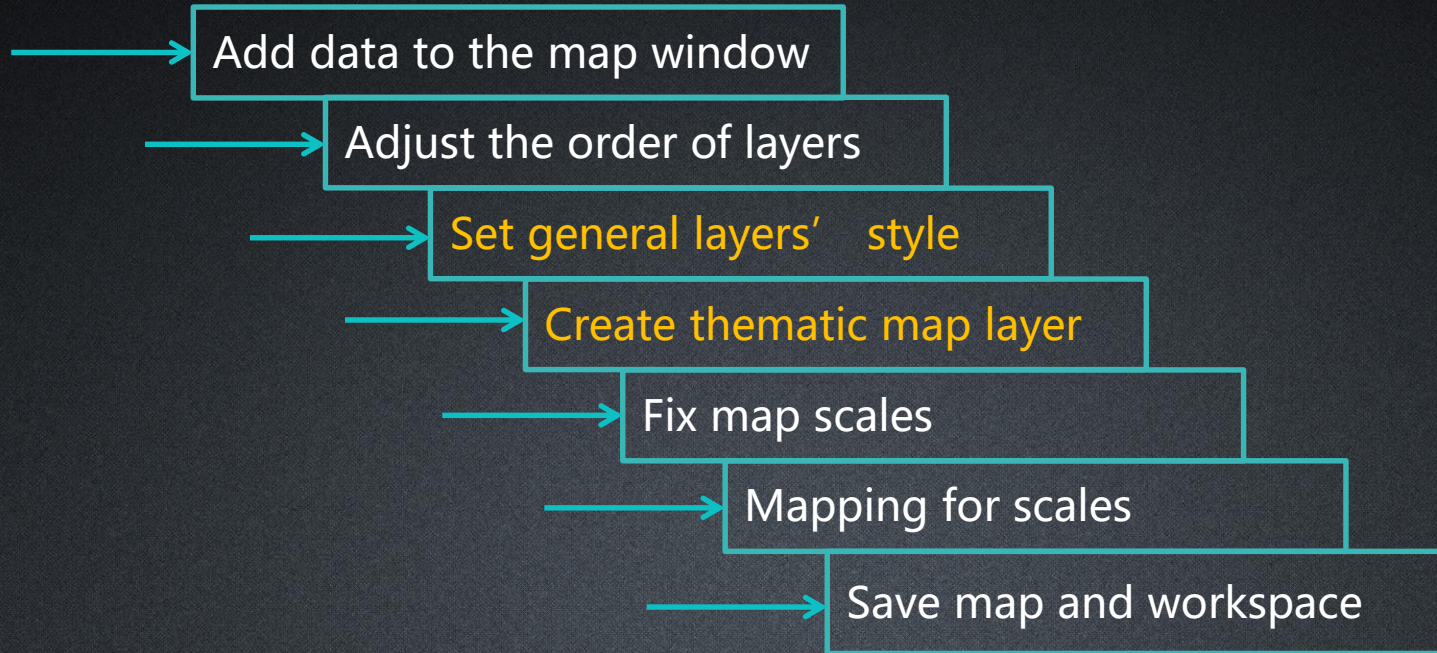


General layers



Thematic layers

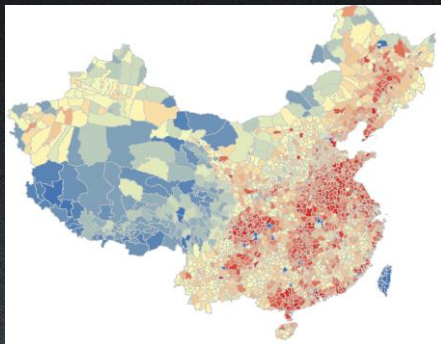
Map Configuration Steps



Create thematic map layer



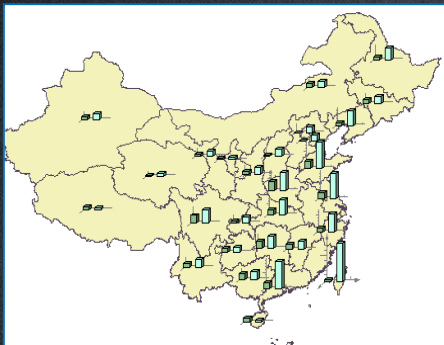
Unique Values Map



Ranges Map



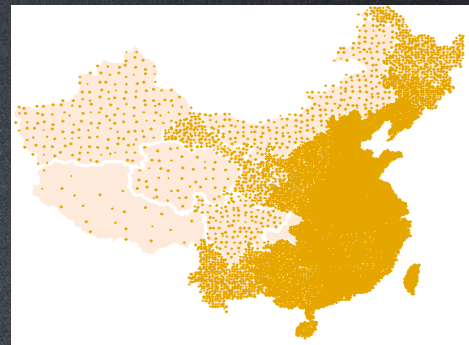
Label Matrix Map



Graph Map

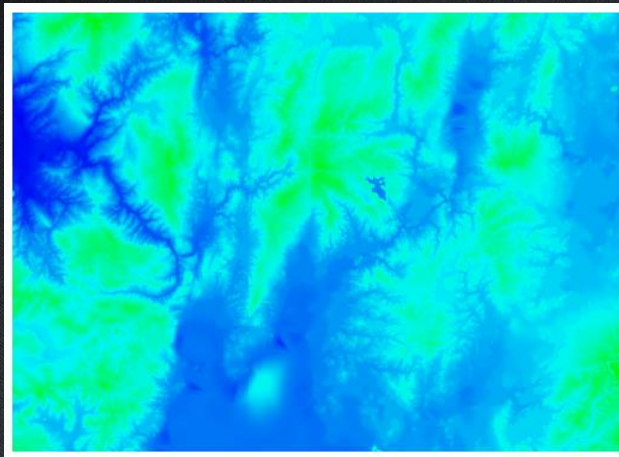


Graduated Symbols Map

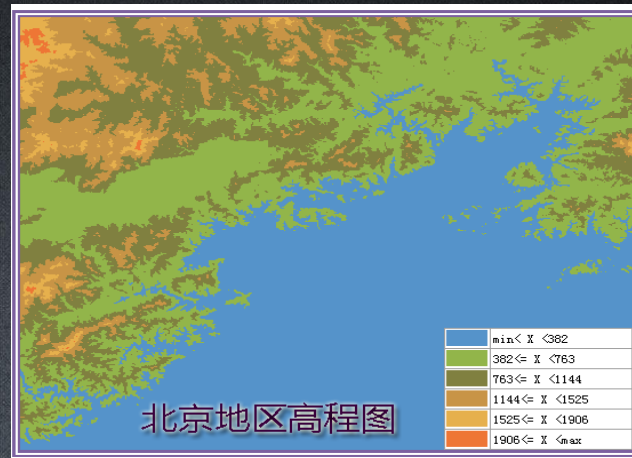


Dot Density Map

Create thematic map layer



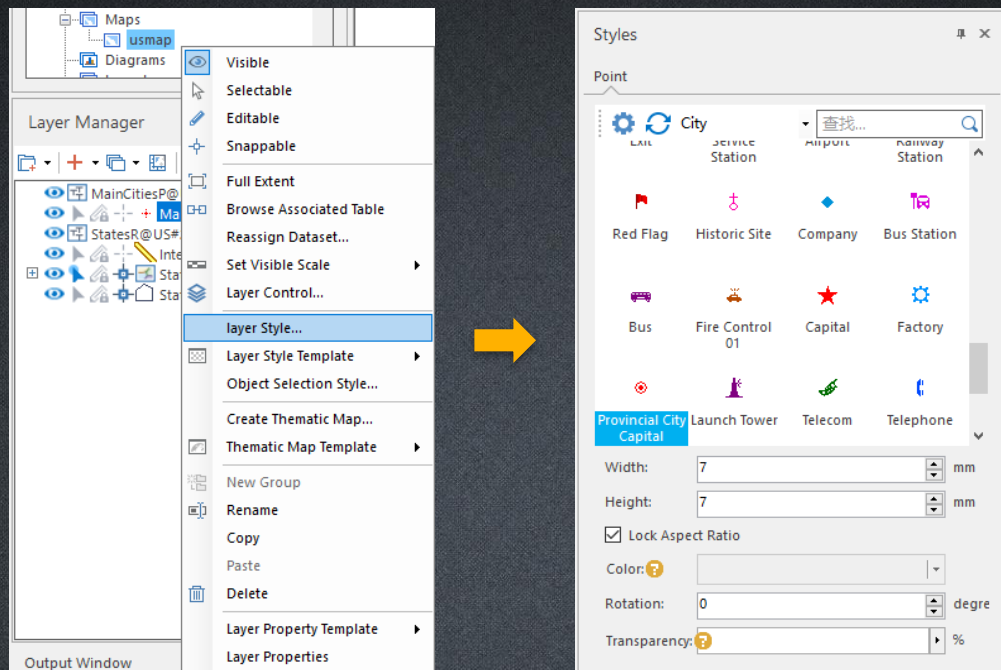
Grid Unique Values Map



Grid Ranges Map

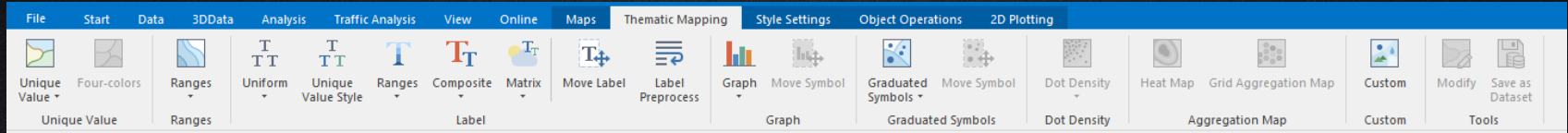
Set general layers' style

- Method 1: click on Marker Symbol/Line Symbol/Fills under Style Settings menu and select a proper symbol for the layer.
- Method 2: select layer -> and right click -> layer style.

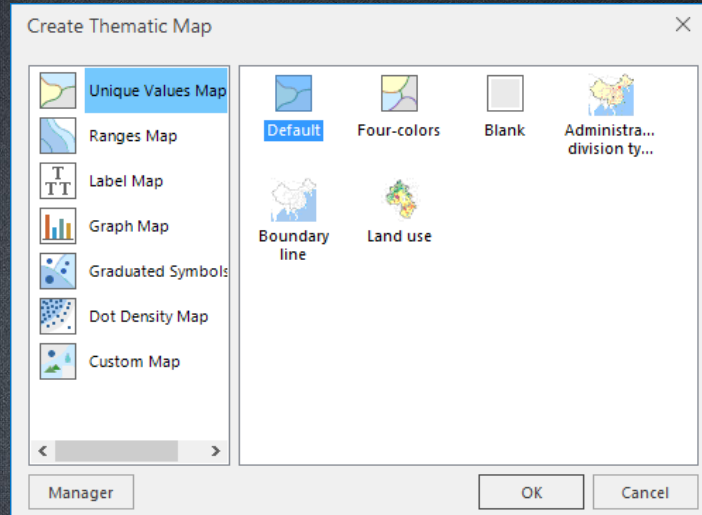
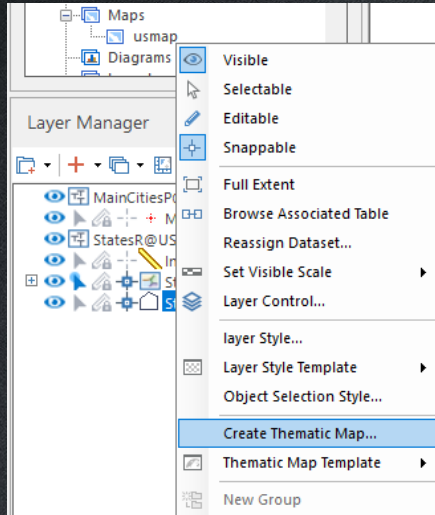


Create thematic map layer

Method 1: select layer -> Thematic Mapping -> select thematic map type



Method 2: select layer -> Right Click -> Create Thematic Map



Create thematic map layer

Thematic Map Manager

Thematic Map: StatesR@US#3

Properties

Expression: POP / SMAREA *1000000

Reset Ranges after Expression Changed

Method: Manual


Range Count: 10

Interval: 39.053666


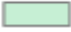
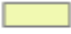




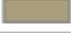


Range Precision: 0.1

Label Format: $0 \leq X < 100$

Color Scheme:

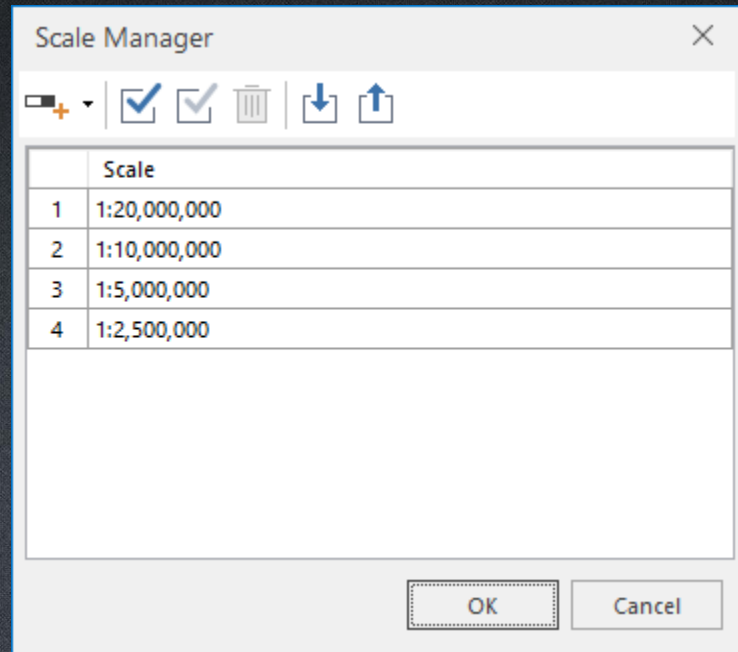


Thematic Map Manager

Vis...	Styl...	Ranges	Title
<input checked="" type="checkbox"/>		2	$\text{min} < X < 2$
<input type="checkbox"/>		5	$2 \leq X < 5$
<input type="checkbox"/>		10	$3 \leq X < 117.3$
<input type="checkbox"/>		16	$10 \leq X < 16$
<input type="checkbox"/>		25	$16 \leq X < 25$
<input type="checkbox"/>		40	$25 \leq X < 40$
<input type="checkbox"/>		60	$40 \leq X < 60$
<input type="checkbox"/>		85	$60 \leq X < 85$
<input type="checkbox"/>		120	$85 \leq X < 120$
<input type="checkbox"/>		max	$120 \leq X < \text{max}$

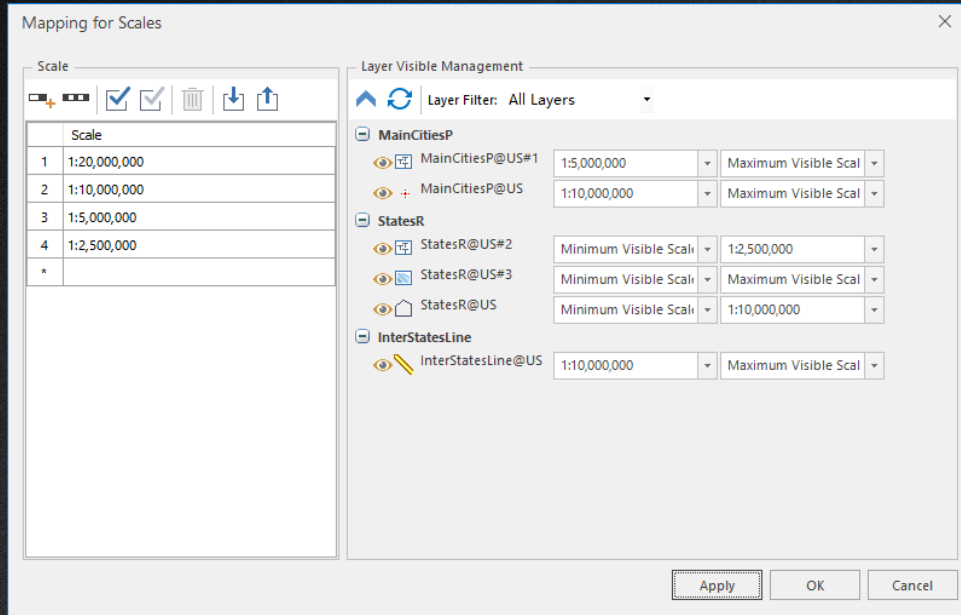
Fix map scales

Method: Map Properties -> Bounds -> Fixed Scale -> Set Scale...



Mapping for scales

Method: Maps -> Mapping -> Mapping for scales



Max Visible Scale

If current map scale \geq given value, the layer will not be visible.

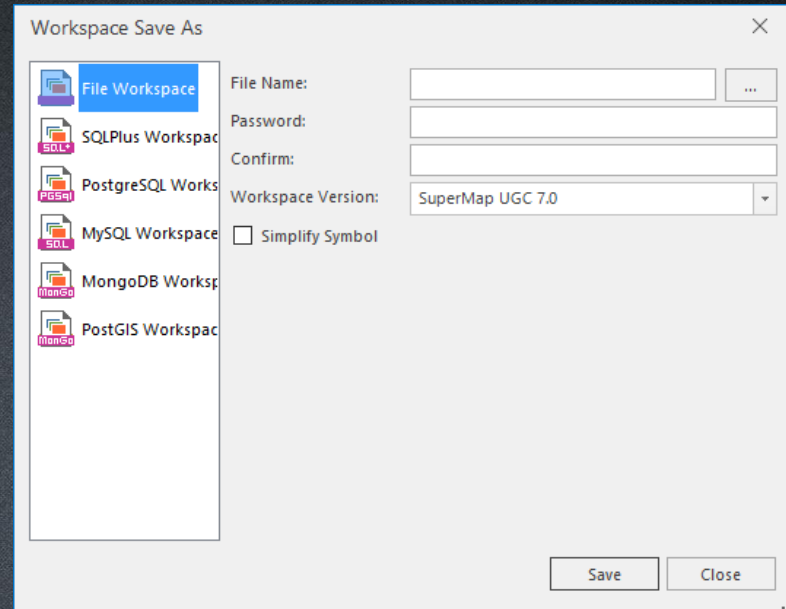
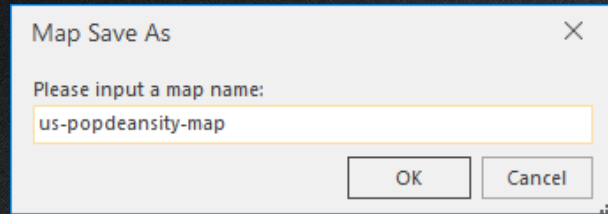
Min Visible Scale

If current map scale $<$ given value, the layer will not be visible.

Save map and workspace

Save Map: map window -> Right Click -> Save Map

Save Workspace : Start ->Workspace-> Save



Thank You!



TO BE THE GLOBAL LEADING GIS